



35TH PHUKET KING'S CUP REGATTA



kingscup.com

Phuket King's Cup Regatta - Official



Photos by : Guy Nowell

ATTACHMENT 2 - COURSE DIAGRAMS for Keelboats and Multihulls



Practice Race: Sunday 3rd December

All competitors are invited to participate in a non-scoring practice race to be conducted in the area off Kata Beach.

The first warning signal will be at 13.00 hrs.

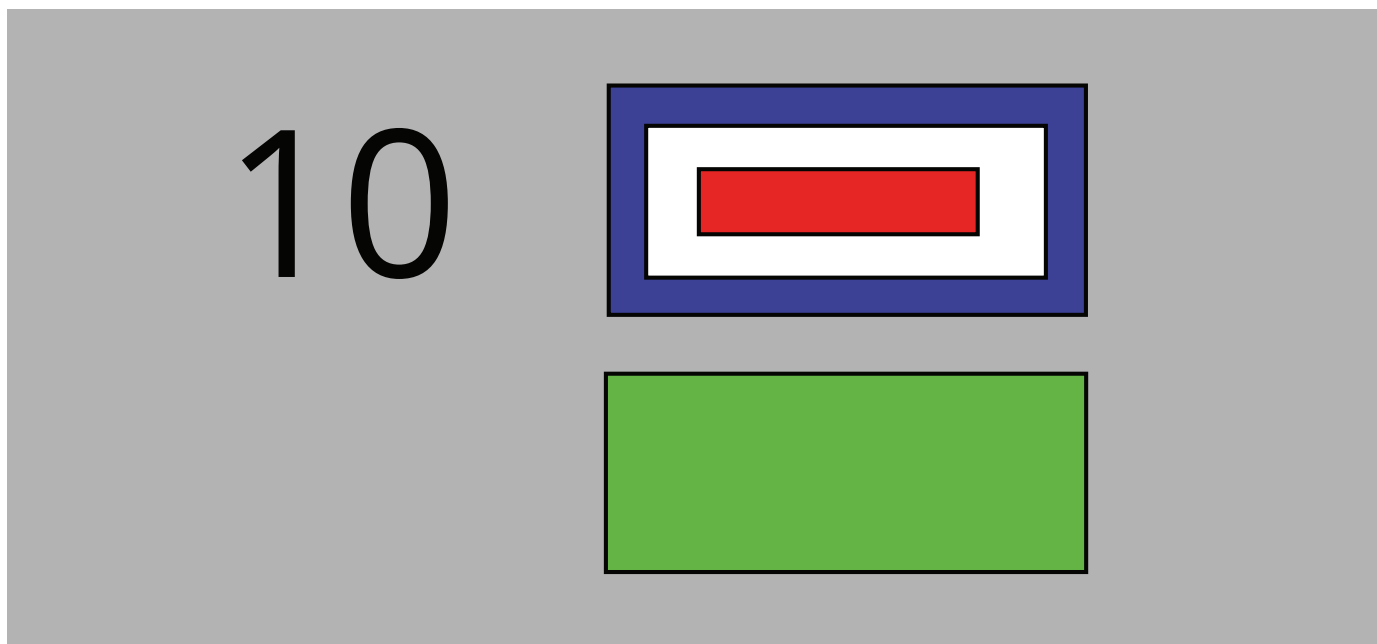
Race Committee

Posted 16:00 27/11/2023

Essential Information

Sailing Instruction 9.7 - Change of direction for rounding of 1st Mark.
Courses (1-18 inclusive and 31 - 43 inclusive)

If Flag W is displayed with the course number board,
The direction of rounding the "FIRST" mark in the course description shall be changed.



The Rounding Direction will be indicated by the Coloured Board displayed below the flag W

If a RED flag is displayed below flag W, then the first mark of the course shall be rounded to PORT

If a GREEN flag is displayed below flag W, then the first mark of the course shall be rounded to STARBOARD

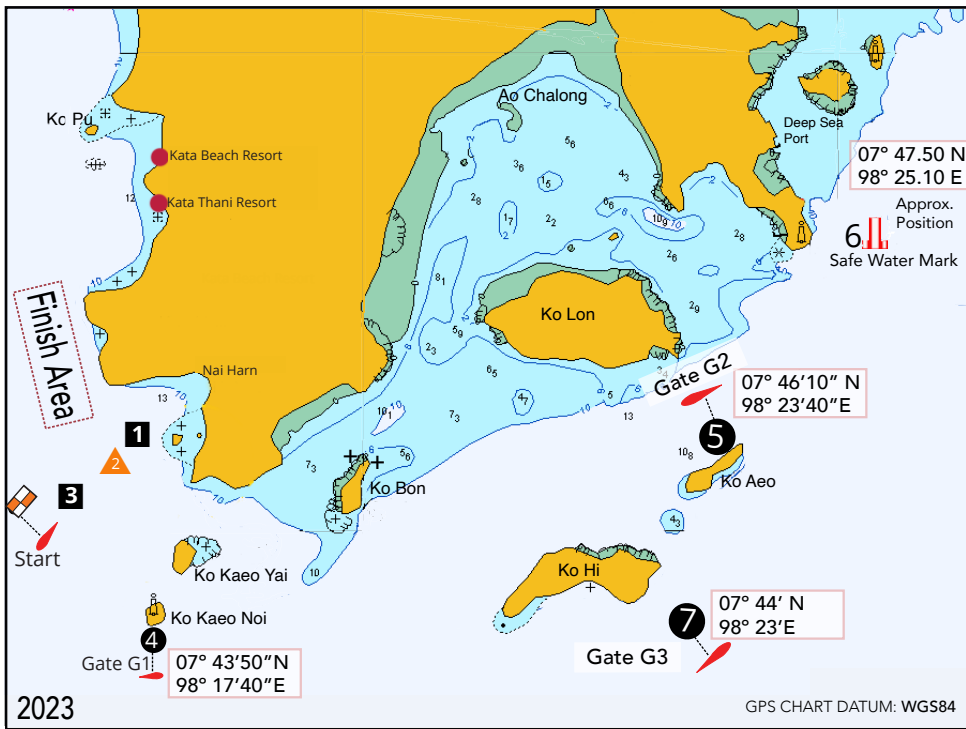
If Flag "W" is not displayed with the course number, the first mark of the course after the start shall be rounded as listed in the course description in attachment 2.

Koh Bon Submerged Rocks

Competitors should be aware of unmarked submerged rocks on the west coast of Koh Bon.

Two recently reported GPS positions are:

07°45.599 N	07°45.520 N
98°19.783 E	98°19.714 E



Course 1 (Distance 24 Miles)

Start
 Mark 1 (Black) to Starboard
 Through Gate G1 (Committee Boat to Starboard)
 Pass Ko Hi to Starboard
 Through Gate G2 (Committee Boat to Port)
 Round Ko Aeo to Starboard
 Through Gate G3 (Committee Boat to Port)
 Pass Ko Hi to Starboard
 Through Gate G1 (Committee Boat to Port)
 Finish (Approximate bearing 340 Degrees)

07° 47.50 N
 98° 25.10 E
 Approx. Position
 6 Safe Water Mark

Course 2 (Distance 28 Miles)

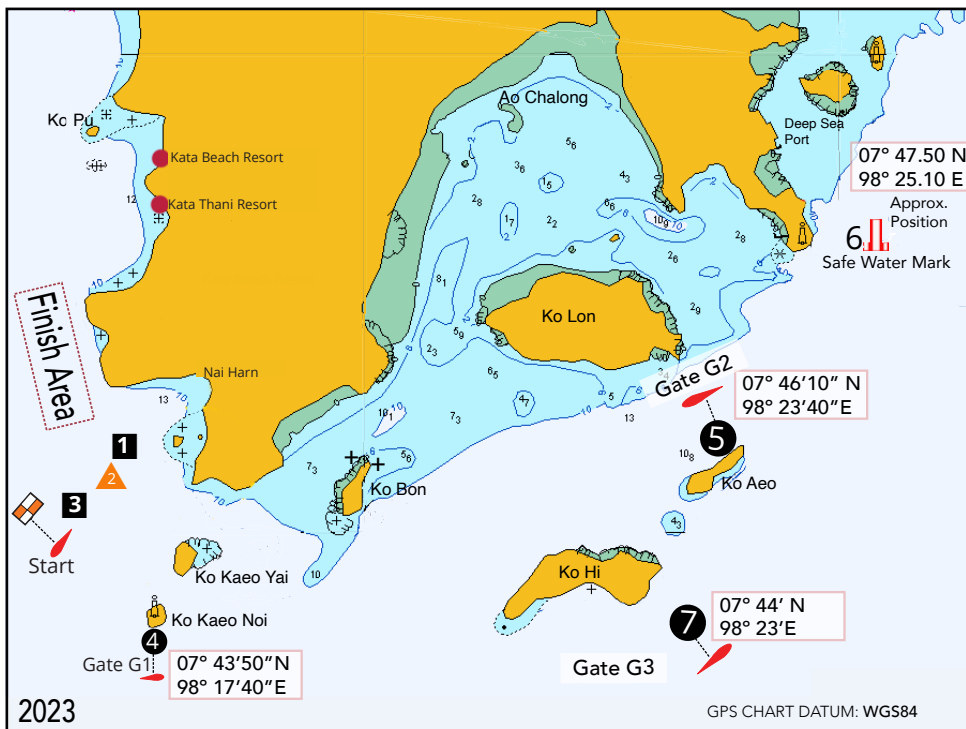
Start
 Mark 1 (Black) to Starboard
 Through Gate G1 (Committee Boat to Starboard)
 Pass Ko Hi to Starboard
 Through Gate G2 (Committee Boat to Port)
 Round Safe Water Mark (6) to Starboard
 Pass Ko Aeo to Starboard
 Through Gate G3 (Committee Boat to Port)
 Pass Ko Hi to Starboard
 Through Gate G1 (Committee Boat to Port)
 Finish (Approximate bearing 340 Degrees)

07° 46'10" N
 98° 23'40" E

07° 44' N
 98° 23' E

2023

GPS CHART DATUM: WGS84



Course 3 (Distance 23 Miles)

Start
 Mark 3 (Yellow) to Starboard
 Through Gate G1 (Committee Boat to Starboard)
 Pass Ko Hi to Starboard
 Through Gate G2 (Committee Boat to Port)
 Round Ko Aeo to Starboard
 Through Gate G3 (Committee Boat to Port)
 Pass Ko Hi to Starboard
 Through Gate G1 (Committee Boat to Port)
 Finish (Approximate bearing 340 Degrees)

07° 47.50 N
 98° 25.10 E
 Approx. Position
 6 Safe Water Mark

Course 4 (Distance 26 Miles)

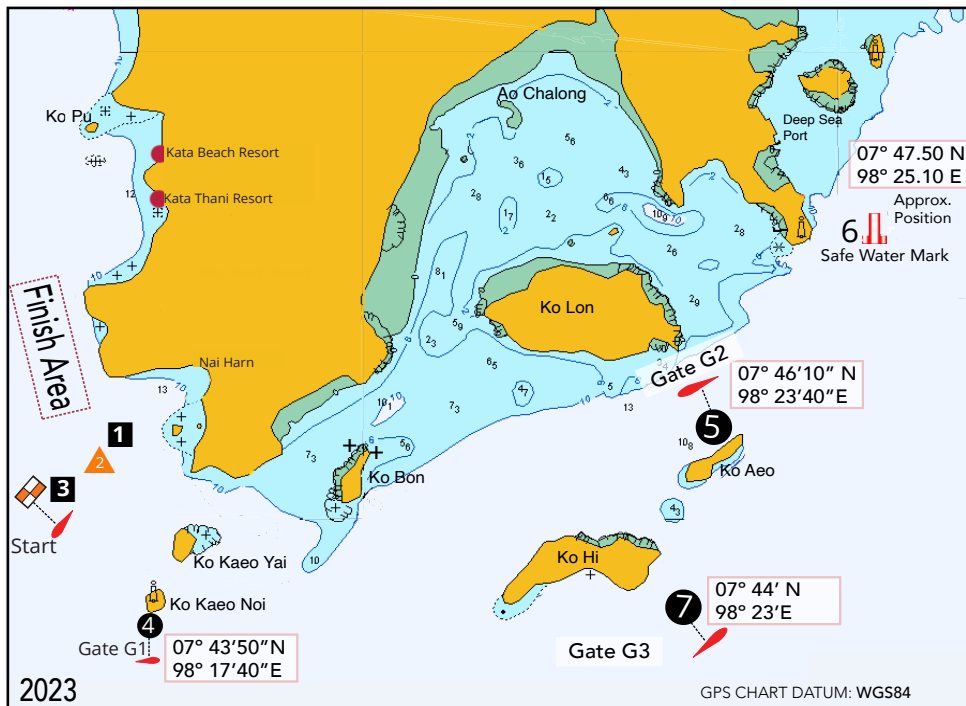
Start
 Mark 3 (Yellow) to Starboard
 Through Gate G1 (Committee Boat to Starboard)
 Pass Ko Hi to Starboard
 Through Gate G2 (Committee Boat to Port)
 Round Safe Water Mark (6) to Starboard
 Pass Ko Aeo to Starboard
 Through Gate G3 (Committee Boat to Port)
 Pass Ko Hi to Starboard
 Through Gate G1 (Committee Boat to Port)
 Finish (Approximate bearing 340 Degrees)

07° 46'10" N
 98° 23'40" E

07° 44' N
 98° 23' E

2023

GPS CHART DATUM: WGS84



Course 5 (Distance 22 Miles)

Start
 Mark 3 (Yellow) to Starboard
 Through Gate G1 (Committee Boat to Starboard)
 Round Ko Bon to Starboard
 Through Gate G2 (Committee Boat to Port)
 Round Ko Aeo to Starboard
 Through Gate G3 (Committee Boat to Port)
 Through Gate G1 (Committee Boat to Port)
 Finish (Approximate bearing 340 Degrees)

07° 47.50 N
 98° 25.10 E
 Approx. Position
 6 Safe Water Mark

Course 6 (Distance 19 Miles)

Start
 Mark 3 (Yellow) to Starboard
 Through Gate G1 (Committee Boat to Starboard)
 Round Ko Bon to Starboard
 Round Ko Hi to Starboard
 Through Gate G3 (Committee Boat to Port)
 Through Gate G1 (Committee Boat to Port)
 Finish (Approximate bearing 340 Degrees)

07° 46'10" N
 98° 23'40" E

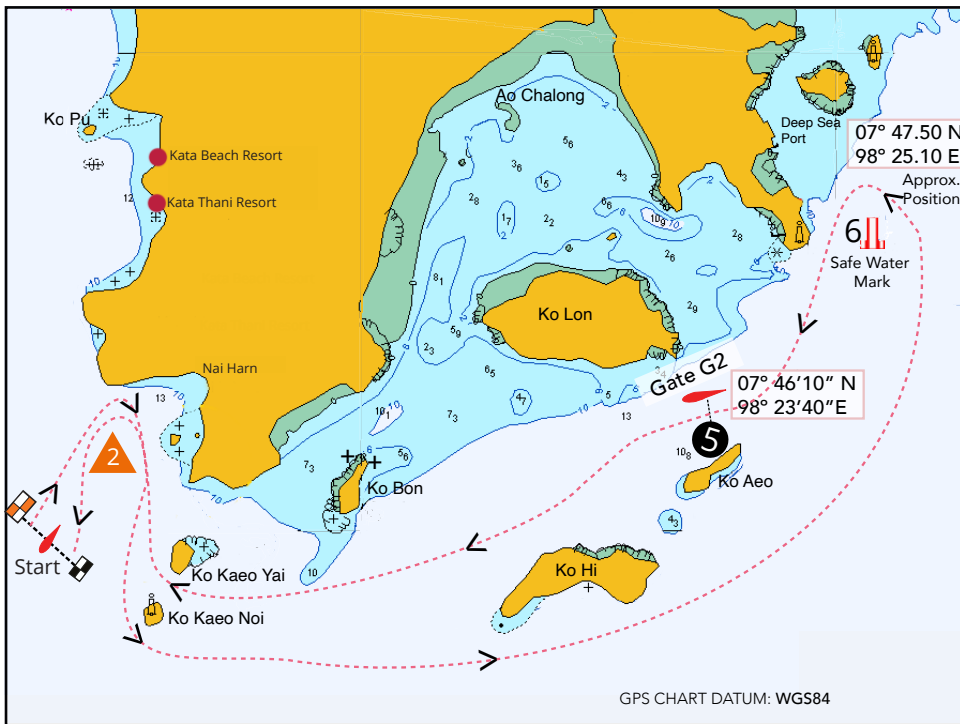
Course 7 (Distance 12 Miles)

Start
 Mark 3 (Yellow) to Starboard
 Through Gate G1 (Committee Boat to Starboard)
 Round Ko Bon to Starboard
 Through Ko Kaeo Noi and Ko Kaeo Yai
 Finish (Approximate bearing 330 Degrees)

07° 44' N
 98° 23' E

2023

GPS CHART DATUM: WGS84



Course 8 (Distance 27 Miles)

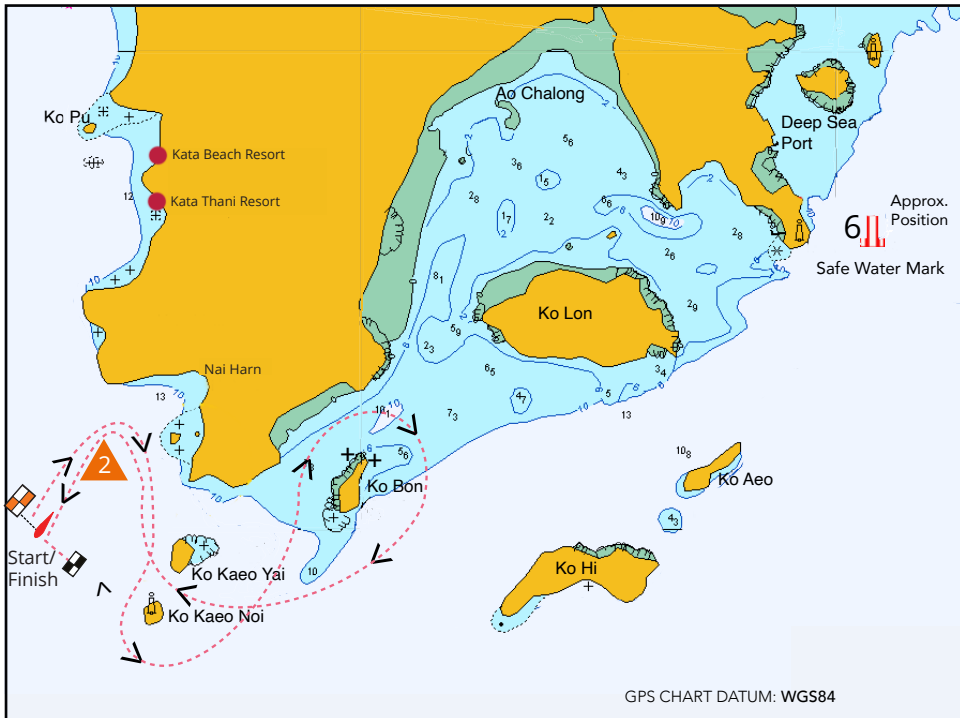
- Start
 Mark 2 to Starboard
 Round Ko Kaeo Noi to Port
 Pass Ko Hi to Port
 Pass Ko Aeo to Port
 Round Safe Water Mark to Port
 Through Gate G2 (Committee Boat to Starboard)
 Pass Ko Aeo to Port, Pass Ko Hi to Port
 Pass Between Ko Kaeo Noi and Ko Kaeo Yai
 Round Mark 2 to Port
 Finish.

Course 9 (Distance 8 Miles)

- (Not Illustrated)
 Start
 Mark 2 to Starboard
 Round Ko Kaeo Noi to Port
 Pass Between Ko Kaeo Noi and Ko Kaeo Yai
 Round Mark 2 to Port
 Finish.

GPS CHART DATUM: WGS84

2023



Course 10 (Distance 14 Miles)

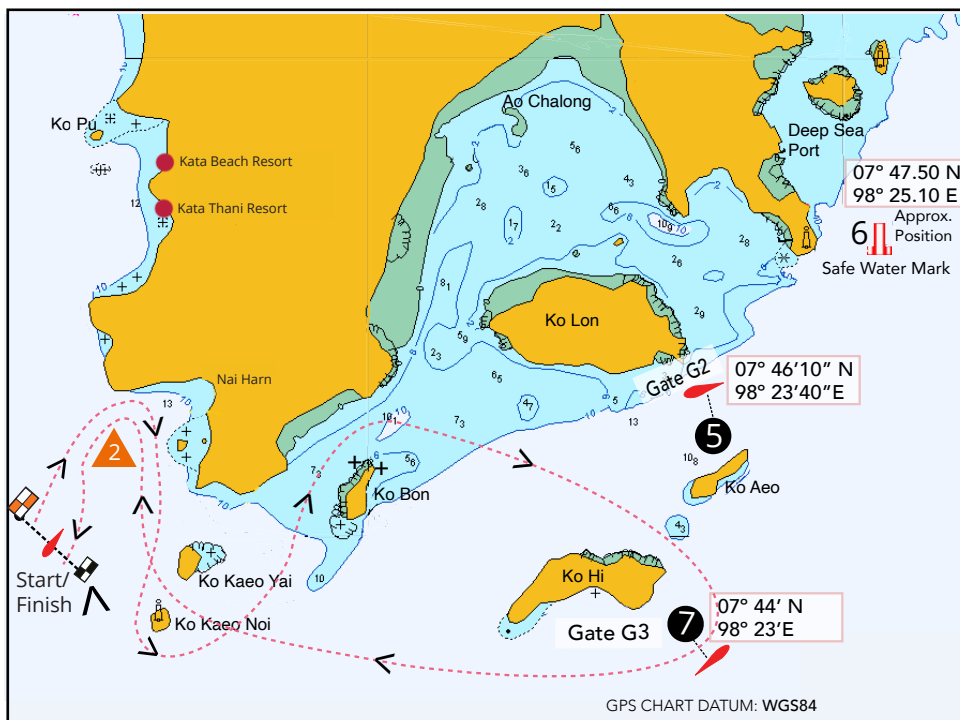
- (Illustrated)
 Start
 Mark 2 to Starboard
 Round Ko Kaeo Noi to Port
 Round Ko Bon to Starboard
 Pass Between Ko Kaeo Yai and Ko Kaeo Noi
 Round Mark 2 to Port
 Finish

Course 11 (Distance 14 Miles)

- (Not Illustrated)
 Mark 2 to Starboard
 Round Ko Kaeo Noi to Port
 Round Ko Bon to Port
 Pass Between Ko Kaeo Yai and Ko Kaeo Noi
 Round Mark 2 to Port
 Finish

GPS CHART DATUM: WGS84

2023

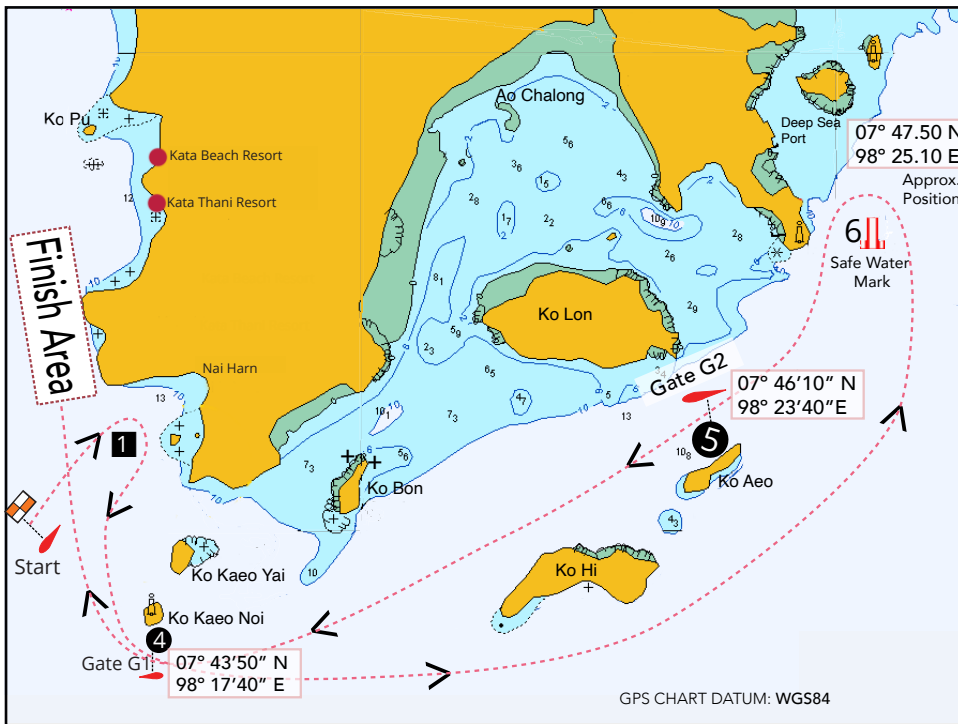


Course 12 (Distance 18 Miles)

- (Illustrated)
 Start
 Mark 2 to Starboard
 Round Ko Kaeo Noi to Port
 Round Ko Bon to Starboard
 Round Ko Hi to Starboard
 Pass Between Ko Kaeo Yai and Ko Kaeo Noi
 Round Mark 2 to Port
 Finish

GPS CHART DATUM: WGS84

2023



Course 13 (Distance 27 Miles)

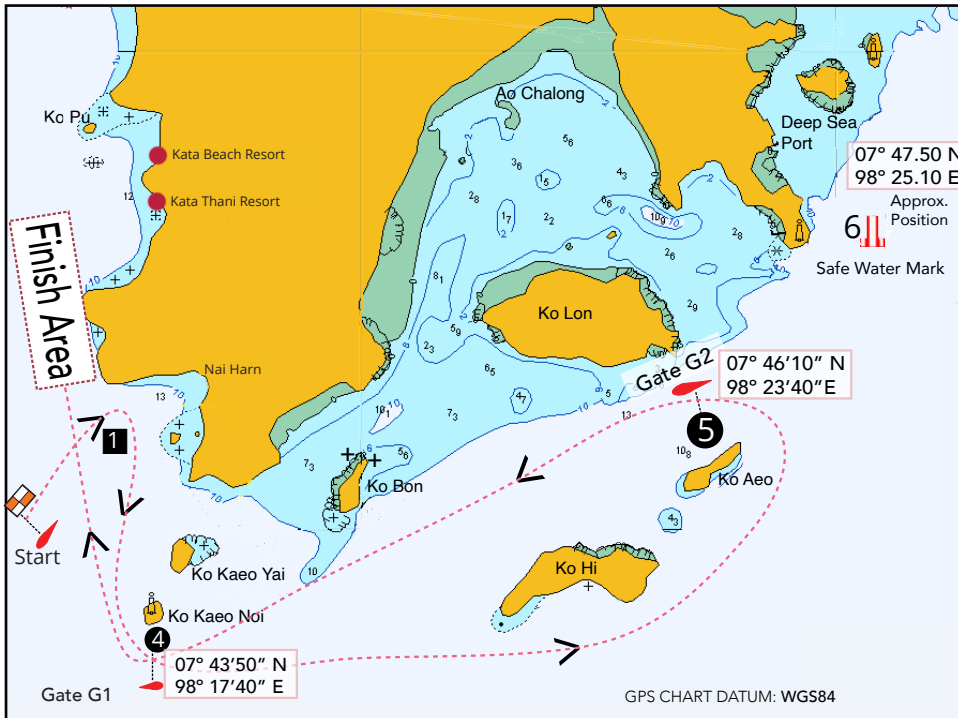
Start
 Mark 1 to Starboard
 Through Gate G1 (Committee Boat to Starboard)
 Pass Ko Hi to Port
 Pass Ko Aeo to Port
 Round Safe Water Mark to Port
 Through Gate G2 (Committee Boat to Starboard)
 Pass Ko Aeo to Port, Pass Ko Hi to Port
 Through Gate G1
 (Committee Boat to Port)
 Finish (Approximate bearing 340 Degrees)

Course 14 (Distance 8 Miles)

(Not Illustrated)
 Start
 Mark 1 to Starboard
 Through Gate G1 (Committee Boat to Starboard)
 Round Ko Kaeo Noi to Port
 Finish (Approximate bearing 340 Degrees)

GPS CHART DATUM: WGS84

2023



Course 15 (Distance 22 Miles)

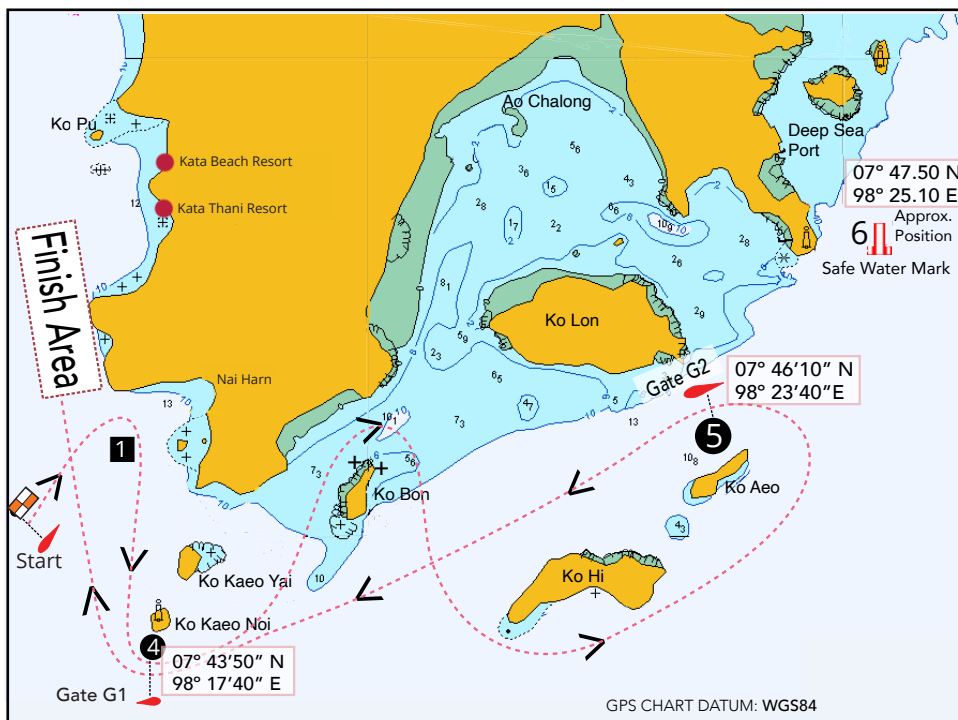
(Illustrated)
 Start
 Mark 1 to Starboard
 Through Gate G1 (Committee Boat to Starboard)
 Pass Ko Hi to Port
 Round Ko Aeo to Port
 Through Gate G2 (Committee Boat to Starboard)
 Pass Ko Aeo to Port, Pass Ko Hi to Port
 Through Gate G1 (Committee Boat to Port)
 Finish (Approximate bearing 340 Degrees)

Course 16 (Distance 19 Miles)

(Not Illustrated)
 Start
 Mark 1 to Starboard
 Through Gate G1 (Committee Boat to Starboard)
 Round Ko Hi to Port
 Through Gate G1 (Committee Boat to Port)
 Finish (Approximate bearing 340 Degrees)

GPS CHART DATUM: WGS84

2023



Course 17 (Distance 24 Miles)

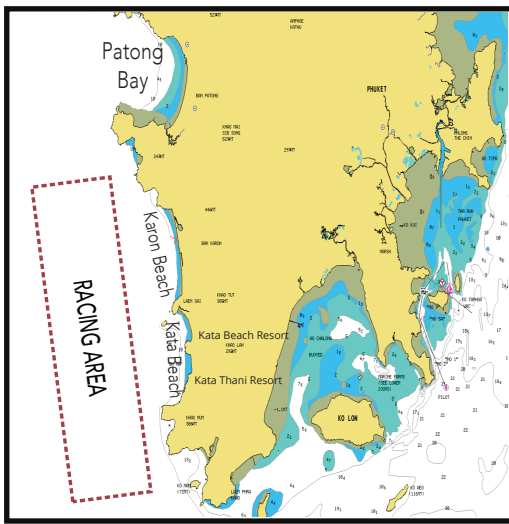
(Illustrated)
 Start
 Mark 1 to Starboard
 Through Gate G1 (Committee Boat to Starboard)
 Round Ko Bon to Starboard
 Pass Ko Hi to Port, Pass Ko Aeo to Port
 Through Gate G2 (Committee Boat to Starboard)
 Pass Ko Aeo to Port, Pass Ko Hi to Port
 Through Gate G1 (Committee Boat to Port)
 Finish (Approximate bearing 340 Degrees)

Course 18 (Distance 14 Miles)

(Not Illustrated)
 Start
 Mark 1 to Starboard
 Through Gate G1 (Committee Boat to Starboard)
 Round Ko Bon to Starboard
 Through Gate G1 (Committee Boat to Port)
 Finish (Approximate bearing 340 Degrees)

GPS CHART DATUM: WGS84

2023



Distance to Mark 1
Approx 5 NM

Courses 19 -20 (Coastal)

All marks rounded to port

- 19. Start - 1 - 6 - Finish (12 Miles)
- 20. Start - 1 - 6 - 1 - 6 - Finish (16 Miles)



The race committee will endeavor to lay Mark 6 approximately 2 miles downwind from Mark 1 2023



Courses 21 - 24 (Windward/Leeward and Geometric)

All marks rounded to port

- 21. Start - 1 - 4 - 3 - 1 - Finish
- 22. Start - 1 - 3 - 1 - 4 - 3 - 1 - Finish
- 23. Start - 2 - 4 - Finish
- 24. Start - 2 - 4 - 3 - 2 - Finish



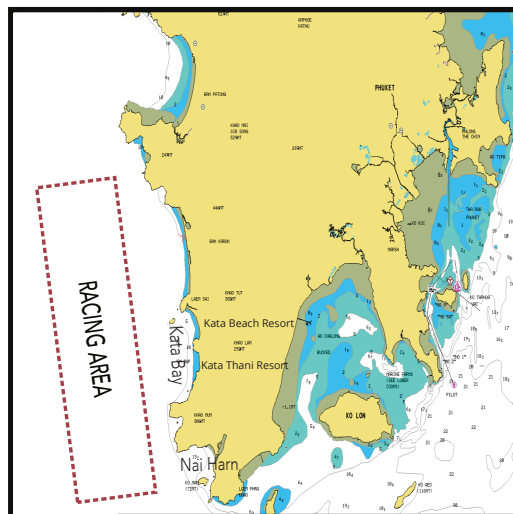
WIND



If the letter G is displayed with any course description this will denote that a gate 3s, 3p will replace Mark 3.



The race committee will endeavor to lay Mark 4 at 60° from the Windward Mark 2023



Courses 25 - 30 (Windward/Leeward)

All marks rounded to port

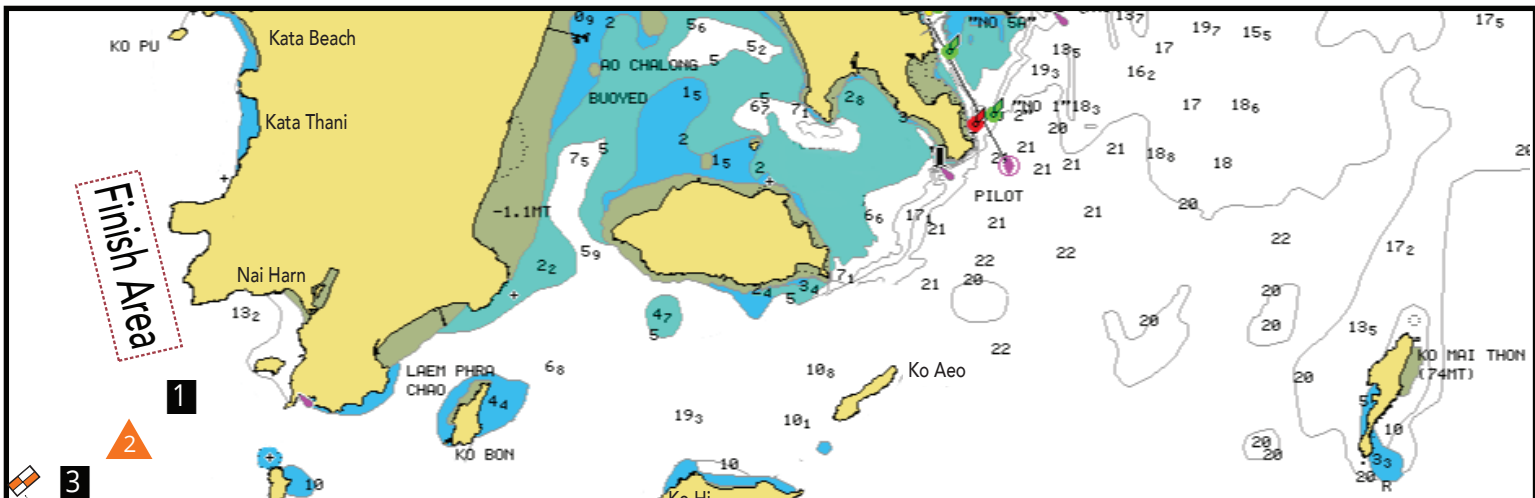
- 25. Start - 1 - 3 - 1 - Finish
- 26. Start - 1 - 3 - 1 - 3 - 1 - Finish
- 27. Start - 1 - 1s - 3 - 1 - 1s - Finish
- 28. Start - 1 - 1s - 3 - 1 - 1s - 3 - 1 - 1s - Finish
- 29. Start - 2 - 3 - 2 - Finish
- 30. Start - 2 - 3 - 2 - 5 - 2 - Finish



If the letter G is displayed with any course description this will denote that a gate 3s, 3p will replace Mark 3.



2023



Start

Finish Area

1

2

3

4

Gate G1
07° 43'50" N
98° 17'40" E

07° 45'30" N
98° 26'30" E

10

The Andaman Sea Race Courses (31 - 43)

GPS CHART DATUM: WGS84

Course 31 (Distance 28 Miles)

Start
Round Mark 1 to Starboard
Through Gate G1 (Committee Boat to Starboard)
Through Gate G4 (Committee Boat to Starboard)
Round Mark 9 to Port
Through Gate G1 (Committee Boat to Port)
Finish

Course 32 (Distance 32 Miles)

Round Mark 1 to Starboard
Through Gate G4 (Committee Boat to Starboard)
and Round Gate Buoy 8 to Port
Round Ko Hi to Port
Through Gate G1 (Committee Boat to Port)
Finish

Course 33 (Distance 25 Miles)

Start
Round Mark 2 to Starboard
Through Gate G4 (C.Boat to Starboard)
and Round Gate Buoy 8 to Port
Through Gate G1 (C.Boat to Port)
Finish

Course 34 (Distance 32 Miles)

Start
Round Mark 1 to Starboard
Through Gate G1 (C.Boat to Starboard)
Through Gate G4 (C.Boat to Starboard)
and Round Gate Buoy 8 to Port
Round Ko Hi to Port
Through Gate G1 (C.Boat to Port)
Finish

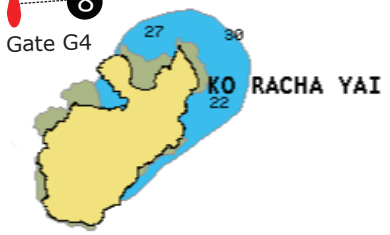
9

07° 39'00" N
98° 24'30" E

07° 37'12" N
98° 21'38" E

8

Gate G4



Course 35 (Distance 34 Miles)

Start
Round Mark 1 to Starboard
Through Gate G4 (C.Boat to Starboard)
and Round Gate Buoy 8 to Port
Round Ko Aeo to Port
Pass Ko Hi to Port
Through Gate G1 (C.Boat to Port)
Finish

Course 36 (Distance 34 Miles)

Start
Round Mark 1 to Starboard
Through Gate G1 (C.Boat to Starboard)
Pass Ko Hi to Starboard
Round Ko Aeo to Starboard
Round Mark 10 to Starboard
Through Gate G4 (C.Boat to Starboard)
Through Gate G1 (C.Boat to Port)
Finish

Course 37 (Distance 27 Miles)

Start
Round Mark 1 to Starboard
Through Gate G1 (C.Boat to Starboard)
Round Mark 9 to Starboard
Through Gate G4 (C.Boat to Starboard)
Through Gate G1 (C.Boat to Port)
Finish

Course 38 (Distance 31 Miles)

Start
Round Mark 1 to Starboard
Through Gate G1 (Committee Boat to Starboard)
Round Ko Hi to Starboard
Round Mark 10 to Starboard
Through Gate G4 (Committee Boat to Starboard)
Through Gate G1 (Committee Boat to Port)
Finish

Course 39 (Distance 39 Miles)

Start
Round Mark 1 to Starboard
Through Gate G1 (Committee Boat to Starboard)
Round Ko Mai Thon to Starboard
Through Gate G4 (Committee Boat to Starboard)
Through Gate G1 (Committee Boat to Port)
Finish

Course 40 (Distance 25 Miles)

Start
Round Mark 1 to Starboard
Through Gate G1 (C.Boat to Starboard)
Round Ko Hi to Starboard
Round Mark 9 to Starboard
Through Gate G1 (Committee Boat to Port)
Finish

Course 41 (Distance 32 Miles)

Start
Round Mark 1 to Starboard
Pass Ko Kao Noi to Port
Round Ko Mai Thon to Port
Pass between Ko Kao Noi and Ko Kao Yai
Finish

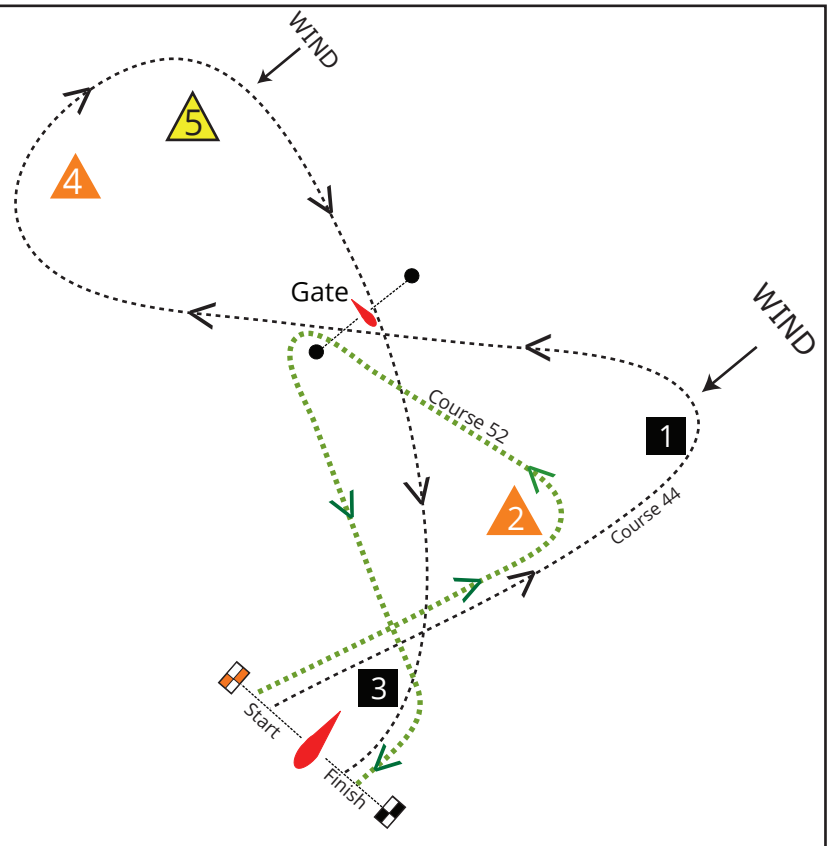
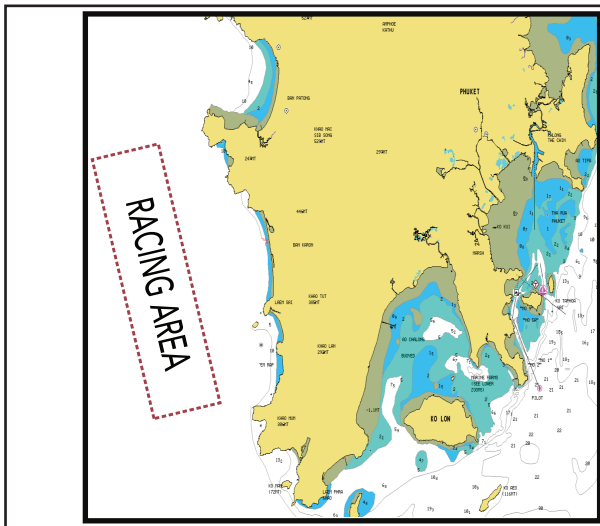
Course 42 (Distance 32 Miles)

Start
Round Mark 1 to Starboard
Pass Ko Kao Noi to Port
Round Ko Mai Thon to Starboard
Pass between Ko Kao Noi and Ko Kao Yai
Finish

Course 43 (Distance 15 Miles)

Start
Pass Ko Kao Noi to Port
Round Ko Hi to Port
Pass between Ko Kao Noi and Ko Kao Yai
Round Mark 2 to Port - Finish

The GPS locations included in the course descriptions are provided using the WGS84 datum. All gate positions are approximate and subject to prevailing conditions.



Courses 44 - 52 (Coastal)

Direction of Marks (all courses):

Pass through Gate with Committee Boat to Starboard
 Pass Marks as indicated (P to Port, S to Starboard)

- 44. Start - 1P - Gate - 4S - 5S - Gate - 3S - Finish
- 45. Start - 1P - Gate - 4S - 5S - 4S - 5S - Gate - 3S - Finish
- 46. Start - 2P - Gate - 4S - 5S - Gate - 3S - Finish
- 47. Start - 2P - 3P - 2P - Gate - 4S - 5S - Gate - 3S - Finish
- 48. Start - 1P - 3P - 1P - Gate - 4S - 5S - Gate - 3S - Finish
- 49. Start - 1P - 3P - 1P - Gate - 4S - Gate - 3S - Finish
- 50. Start - 2P - 3P - 2P - Gate - 4S - Gate - 3S - Finish
- 51. Start - 2P - Gate - 4S - Gate - 3S - Finish
- 52. Start - 2P - Through Gate and Round Port Gate Buoy - 3S - Finish

Course 44 and 52 are Illustrated as example only.

2023

Phuket Tide Timetable - Ko Taphao Noi

DATE	สูงของน้ำทำนายเป็นเมตรเหนือระดับน้ำลงต่ำที่สุด																							
	HOUR HEIGHTS OF WATER IN METERS											HEIGHTS OF WATER PREDICTED IN METERS ABOVE THE LOWEST LOW WATER												
	0	1	2	3	4	5	6	7	8	9	10	11	12	13	14	15	16	17	18	19	20	21	22	23
1	3.2	3.1	2.8	2.3	1.8	1.4	1.1	1.1	1.3	1.7	2.1	2.4	2.6	2.7	2.5	2.2	1.9	1.5	1.3	1.3	1.5	1.9	2.3	2.7
2	3.0	3.0	2.9	2.6	2.1	1.7	1.3	1.2	1.3	1.5	1.9	2.2	2.5	2.6	2.5	2.4	2.1	1.8	1.5	1.4	1.5	1.8	2.1	2.4
3	2.7	2.9	2.9	2.7	2.3	2.0	1.6	1.4	1.4	1.5	1.7	2.0	2.3	2.4	2.5	2.4	2.2	2.0	1.8	1.6	1.6	1.7	1.9	2.2
4	2.5	2.7	2.7	2.7	2.5	2.2	1.9	1.6	1.5	1.5	1.6	1.8	2.1	2.3	2.4	2.4	2.3	2.2	2.0	1.9	1.8	1.8	1.9	2.0
5	2.2	2.4	2.5	2.6	2.5	2.3	2.1	1.9	1.7	1.6	1.6	1.7	1.9	2.0	2.2	2.3	2.4	2.3	2.2	2.1	2.0	1.9	1.9	1.9
6	2.0	2.2	2.3	2.4	2.4	2.4	2.3	2.1	1.9	1.8	1.7	1.6	1.7	1.8	2.0	2.2	2.3	2.4	2.4	2.4	2.2	2.1	2.0	1.9
7	1.9	1.9	2.0	2.2	2.3	2.4	2.4	2.3	2.2	2.0	1.8	1.7	1.6	1.6	1.8	2.0	2.2	2.4	2.5	2.6	2.5	2.4	2.2	2.0
8	1.8	1.7	1.8	1.9	2.1	2.3	2.4	2.4	2.4	2.2	2.0	1.8	1.6	1.5	1.5	1.7	2.0	2.3	2.5	2.7	2.7	2.6	2.4	2.1
9	1.8	1.6	1.5	1.6	1.8	2.0	2.3	2.5	2.5	2.5	2.2	1.9	1.7	1.4	1.4	1.5	1.7	2.0	2.4	2.7	2.9	2.9	2.7	2.4
10	2.0	1.6	1.4	1.3	1.5	1.8	2.1	2.4	2.6	2.6	2.5	2.2	1.8	1.5	1.3	1.3	1.4	1.8	2.2	2.6	2.9	3.0	3.0	2.7

Dates for your diary.....

- Royal Langkawi International Regatta
- The Bay Regatta (Phuket, PhangNga, Krabi)
- Top of the Gulf Regatta (Pattaya)
- Samui Regatta (Ko Samui)
- The Yacht Sales Co. Regatta (Phuket)

- 15th - 20th January 2024
- 31st Jan - 4th February 2024
- TBC
- 25th May - 1st June 2024
- 6th - 11th July 2024